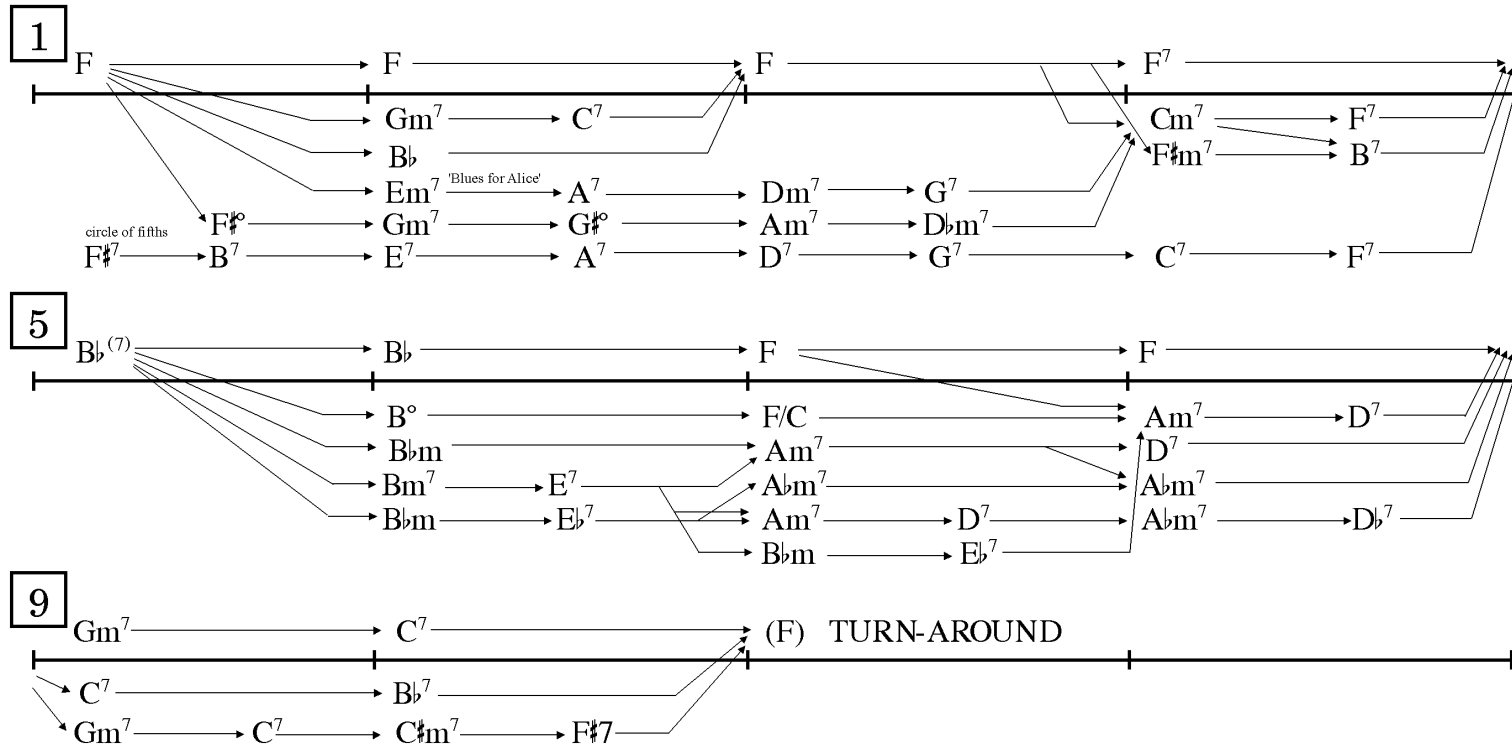


Common Jazz Progressions and (some of) their Variants

—musi 615 KAZ

BLUES (in F)



The above blues progressions represent only a few of the possibilities (perhaps the most common ones). They are all variants of the same basic structure. The chords are given in their most basic form ($ii^7-V^7-I^{maj7}$) but are usually embellished by any number of added “extensions” (or “tension” tones). For instance:

ii^7 (mm^7) can appear as Gm^7 , $Gm^{\flat 9}$, Gm^{11} , $Gm^{\flat 5}$ ($G^{\flat 9}$), etc.

V^7 (Mm^7) can appear as C^7 , $C^{\flat 9}$, $C^{\flat 7}$, $C^{\flat 9}$, $C^{\flat 5}$, $C^{\flat 7}$, $C^{\flat 9}$, $C^{\flat 9}$, etc.

I^{maj7} (MM^7) can appear as F^{maj7} , F^6 , F^9 , etc.

Similarly, the turn-around measures have many possible variants:

F	C7 †	
F	Gm ⁷ C ⁷ *	
F D ⁷	Gm ⁷ C ⁷ *	
F F [♯] ^o	Gm ⁷ C ⁷ *	
F D ⁷	G ⁷ † C ⁷ *	
Am ⁷ D ⁷	Gm ⁷ C ⁷ *	
Am ⁷ Abm ⁷	Gm ⁷ C ⁷ *	
A ⁷ D ⁷	G ⁷ † C ⁷ *	
F Ab ⁷	Db ⁷ Gb ⁷	
F Ab ⁷	G ⁷ Gb ⁷	

'Giant Steps'

* could substitute G^b⁷
 † could substitute D^b⁷

